

Fanless Full-Flat POS Terminal Installation Guide

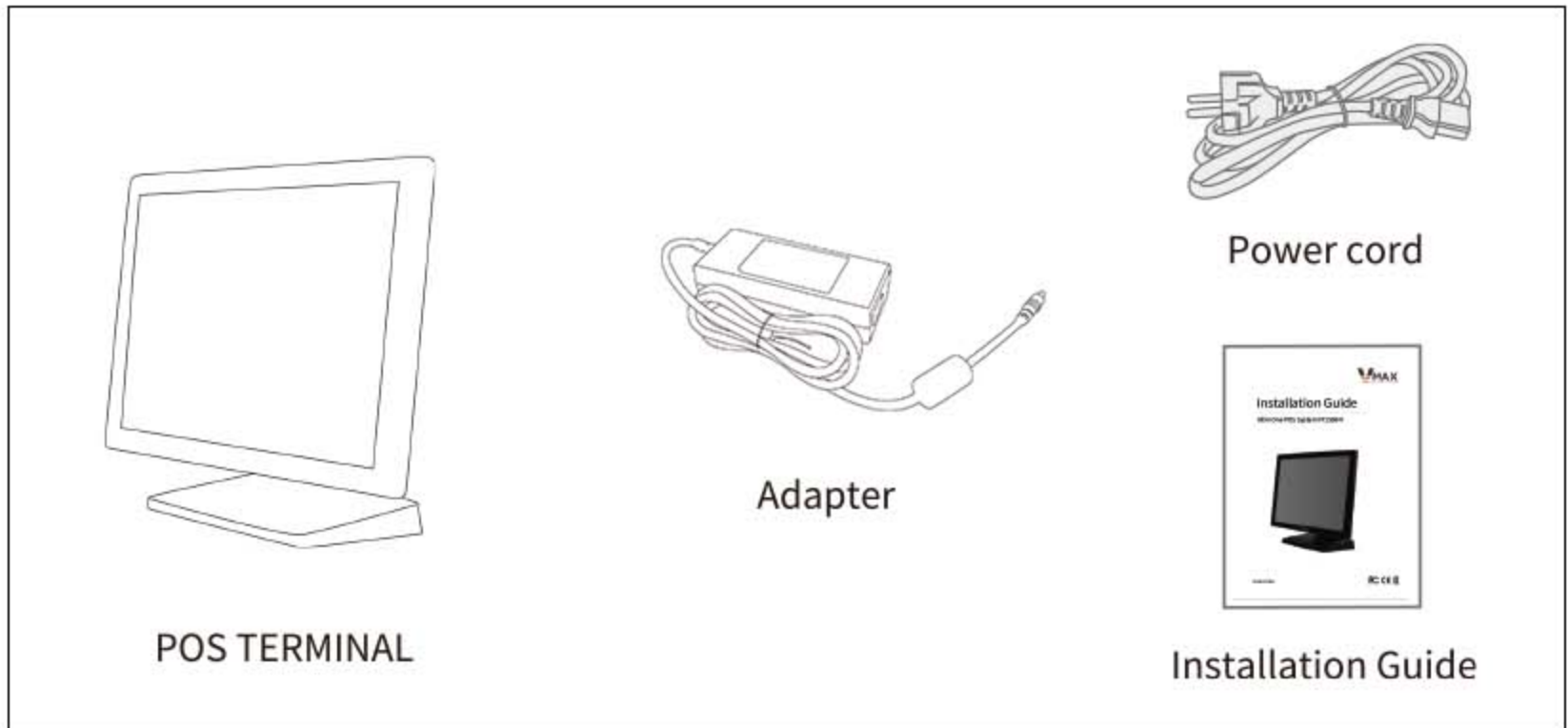
VT1500-V&VT1560-V



VT1500-V&VT1560-V Specifications

SYSTEM	Processor	Intel®Core™ I3-1215U Intel®Core™ I5-1235U
	Memory	DDR4 4GB / 8GB/ 16GB/ 32GB RAM
	Storage	128GB, 256GB, 512GB,1TB M.2 SSD
	OS	Windows/Linux
DISPLAY	Size & Resolution Touch	VT1500-V: 15" 1024x768 / VT1560-V: 15.6" 1920x1080 P-CAP Touch LCD/ Capacitive 10-point touch
Standard Interfaces	DC	DC Port *1
	Serial Port	COM*1
	HDMI	HDMI*1
	USB	USB3.0*4
	LAN	LAN*1
	Audio	Line-out+Mic 2in 1*1
Extended interfaces		USB2.0*2 side+USB2.0*4
POWER	Power Adapter	DC 12V 7.5A
FUNCTION OPTION	Wifi/Bluetooth	Optional
ENVIRONMENT	Operating Temperature	0~50°C
DIMENSION (F-Stand)	Stand (W x D x H)	351*202*332mm
	Carton Size	480*320*445mm
WEIGHT	Net Weight	6.4 KG
	Package Weight	7.9 KG
CERTIFICATION		CE, FCC, RoHS
WARRANTY		One-Year
COLOR		White / Black
PERIPHERAL (OPTIONS)	Removable SSD Slot, Speaker, Touch Has Sounds, 8/9.7/11.6-Inch Rear Display, VFD, MSR, I-Button, PoE LAN Support, OPOS Cash Drawer Port, 3*RJ45 Transfer to DB9 Port	

Package Contents



* Component images are for reference only and may vary by model and option.

Name and Function of each part

Front/Side/Rear view

15 Touch Display

15.6" Touch Display



Stand



Back Cover

Bottom I/O ports

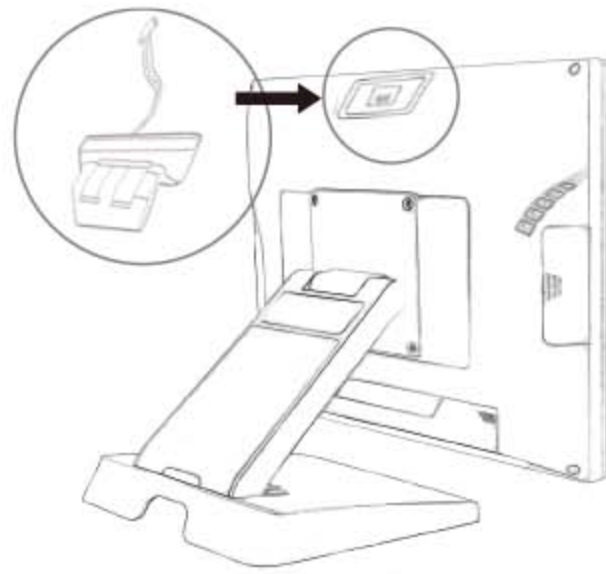
Installation Options

Rear Display

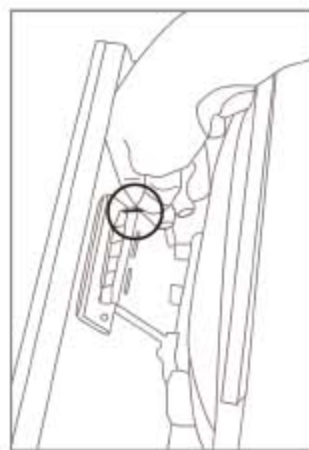
1 Please disassemble back cover



2 After seeing the interface on the back cover, please connect the rear display cable to the interface.



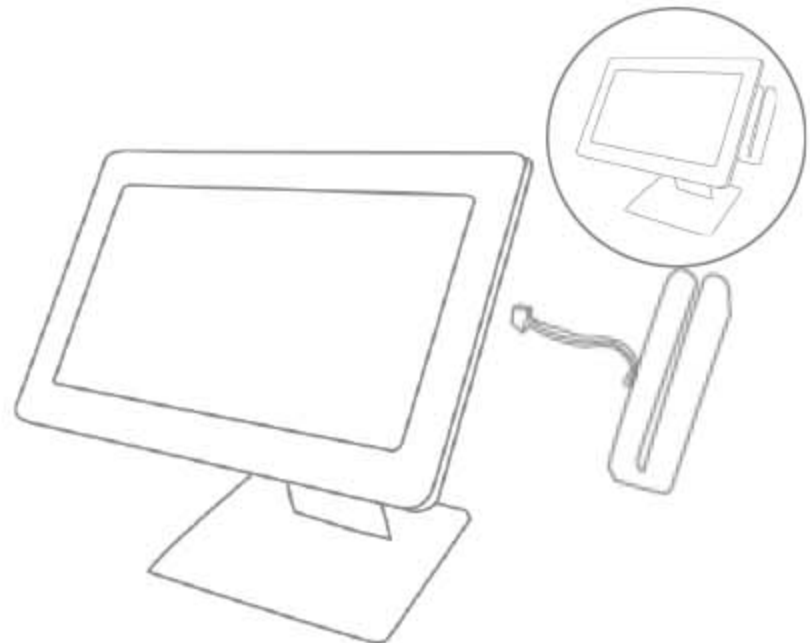
3 After connecting the cable of the rear display, please tighten the screws to secure it. This way, the rear display will be properly installed.



Magnetic Stripe Reader

1 Open the black cover on the right side to see the interface connected to the MSR.

2 Connect the cable to the MSR interface and tighten the screws, thus Magnetic Stripe Reader reader is installed.



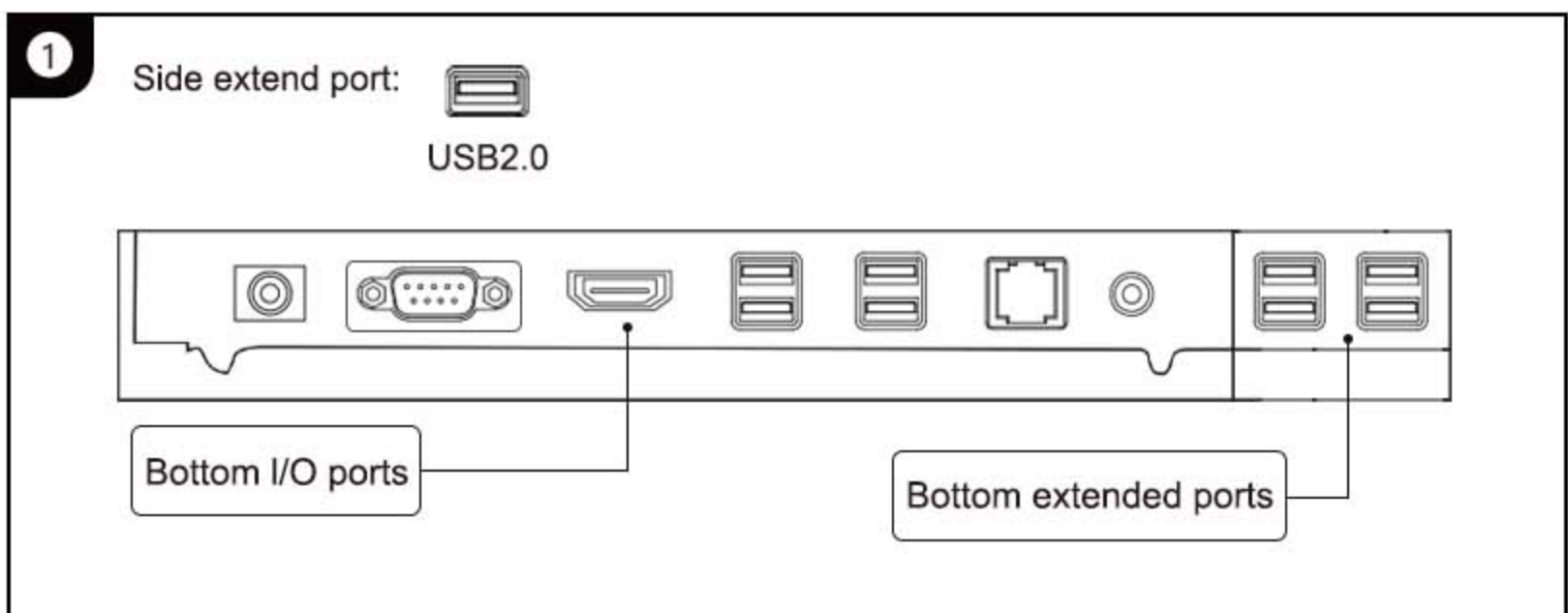
Bottom I/O Ports

I/O Cover Disassemble

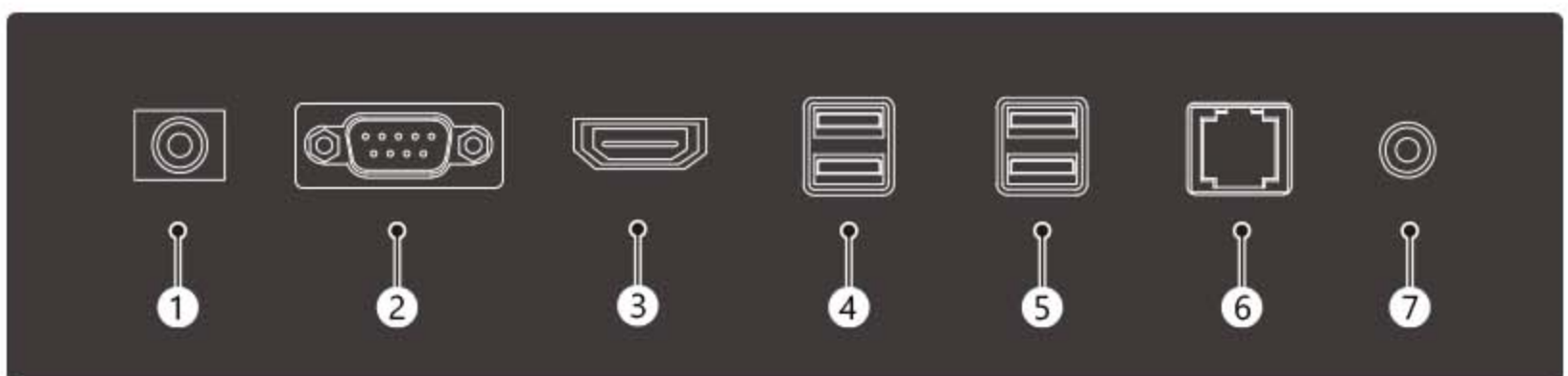
⚠ please proceed I/O ports connection after powering off the system.

- 1 I/O cover will be disassembled by pushing the "PUSH" part of both sides.
- 2 Please connect the I/O ports after checking the locations of bottom I/O ports.

VT1500-V&VT1560-V i5-12th I/O Ports



VT1500-V&VT1560-V i5-12th Bottom



*I/O ports can be changed based on models/specifications/options.

Description

① DC	② COM	③ HDMI
④ USB3.0*2	⑤ USB3.0*2	⑥ LAN
⑦ LINE-OUT+MIC 2in 1		

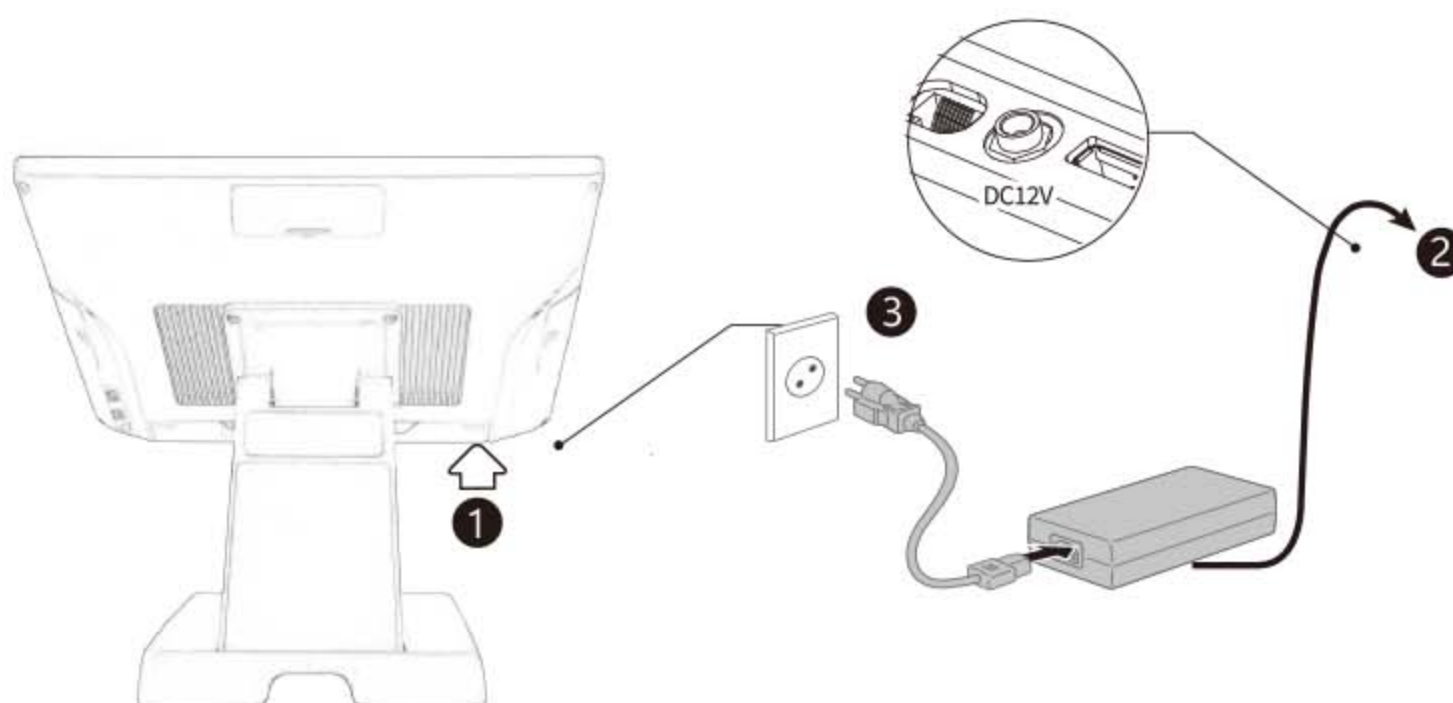
System Connection and Power on

Please install the system referring to video clip thru QR code written in manual.

Power Cord Connection

⚠ Please connect power adaptor DC jack and power cord by turns after all option items are connected.

- ① Bottom I/O cover will be disassembled by pushing the "PUSH" part of both sides.
- ② Please insert power adaptor cable by turning it into Dc 12V port at bottom I/O ports.
- ③ Once you have confirmed the power connection, you can turn on the power switch.



Safety Precautions

*Be sure to read the Safety Precautions before using the POS system.

- Before connecting, make sure the operating voltage is AC100~240V. Otherwise, you may damage the system.
- Do not install the system in an extremely hot or cold place.
- Avoid exposing the product in direct sunlight or in an enclosed space for a long period of time.
- Be careful not to place the system near other high-frequency electromagnetic devices; there is a strong possibility it will lead to a system malfunction or system error.
- Do not place heavy objects on the system.
- Prevent external substances from entering the system.
- Do not change the motherboard's battery by yourself. It can damage the system.
- Before disassembling the system, disconnect all power and cables.
- Do not remove or repair the system by yourself. We highly recommend an engineer's assistance or an experienced technician to open the system, especially the LCD and touch panels which could be easily broken.
- An electrical outlet is needed near the device and it should be easily accessible.

*Risk of explosion if battery is replaced by an incorrect type. Replace only with the same type of batteries recommended by the manufacturer.

This device complies with the EMC (Electromagnetic Compatibility) Regulations, for business purposes. Distributors and users are advised of this matter.

- Do not use excessive force when using or pressing the touch panel.
- Do not use objects with sharp edges on the touch panel.
- Please exchange the equipment if you mistakenly sold or purchased this product.
- Cleaning and Maintenance is relevantly necessary for POS terminal to be operated well.

POS Terminal Security Guideline

Operating System Security

System-provided and managed by the operating system's default security settings must be configured.

Touch Screen Security Guideline

Please take special care with the touch panel as it is vulnerable to scratches.

- Do not use excessive force when using or pressing the touch panel. Do not use objects with sharp edges on the touch panel.
- Be careful not to spill any liquid on the screen.
- Turn off the power switch and unplug all cables before cleaning the screen and/or the system.
- Use a soft, clean, dry cloth for cleaning the system, and do not use chemicals or detergents.